



**YOUR JOURNEY TO  
ULTIMATE RELAXATION  
STARTS HERE**

**UK**



# Contents page

Discover Platinum Spas .....	05	Platinum Premium Shield Plus.....	19
Your wellness is important to us .....	06	Platinum innovations .....	20
Benefits of hot tubs and swim spas .....	07	The Platinum Spas collection.....	30
Who are Platinum Spas.....	08	Deluxe range.....	32
Why choose Platinum Spas.....	09	Premium range .....	38
Hand quality craftsmanship .....	10	Luxury range .....	44
Quality and innovation .....	11	Swim spas.....	50
Control at your fingertips .....	12	Mini pools .....	56
Platinum spa touch.....	13	Vacation Range.....	62
Jet design and formation .....	14	Accessories for your purchase.....	66
Energy efficient insulation.....	16	Frequently asked questions .....	67
Platinum Premium Shield Explained (PPS).....	17	Real customers, real relaxation.....	68
Platinum thermo cover .....	18	Experience relaxation worldwide with our products .....	70





## Discover Platinum Spas – elevate your wellness Journey

### Where innovation meets luxury for unrivalled relaxation

Welcome to the world of Platinum Spas, where cutting-edge technology and luxurious design come together to create the ultimate spa experience. With over a decade of industry expertise and hundreds of thousands of satisfied customers worldwide, Platinum Spas is dedicated to delivering the best in relaxation, hydrotherapy, and wellness. Whether you seek to unwind or rejuvenate, our range of hot tubs and swim spas are crafted to transform your wellbeing.

At the heart of our collection are innovative features that set Platinum Spas apart. From our advanced hydrotherapy systems and intuitive user controls to energy-efficient design and premium materials, each model is built with your comfort and enjoyment in mind. Our dedication to quality ensures every spa delivers an unmatched performance, providing a sanctuary of calm that you can enjoy year after year.

Explore our three exceptional ranges—Deluxe, Premium, and Luxury—each offering a unique blend of indulgence and innovation. Whether you're looking for classic comfort or state-of-the-art features, Platinum Spas has the perfect hot tub for you. Discover the future of wellness today and take your relaxation to the next level with Platinum Spas.





# Your wellness is important to us

**We focus on improving wellness and offer a global range of award-winning hot tubs and swim spas to suit every customer's needs.**

Our hot tubs and swim spas aim to improve wellness, help you relax, spend quality time with loved ones and lead happier and healthier lives.

## What are the benefits of hot tubs and swim spas?

**A hot tub or swim spa offers more than just hours of enjoyment—it provides a range of health benefits. Regular use can reduce stress and anxiety, improve circulation, relieve joint and muscle pain, and promote better sleep.**

The combination of warm water and hydrotherapy jets helps soothe aches caused by injuries, arthritis, or daily strain, often delivering long-lasting relief. You may also enjoy improved skin health and boosted relaxation, making it a holistic wellness experience.

**A swim spa also gives you the benefit of exercise as well as relaxation. They can form an important part of the day to day fitness regime of anyone that wants to stay in good shape.**

Swim spas are the ultimate retreat, offering the perfect combination of relaxation and versatility. Enjoy the soothing power of warm water jets to melt away stress, or make use of swim and tether options for a low-impact way to stay active. Whether you're unwinding or keeping fit, a swim spa provides the best of both worlds.





## Who are Platinum Spas

**We offer the widest choice of award-winning hot tubs and swim spas in the Superior Wellness portfolio.**

Taking pride in the quality of our hot tub and swim spas and using the latest technology on the build and design work to create cutting edge products.

### Our Values

Our brand values at Platinum Spas are hugely important to us and we live and breathe them every day.

### Quality

Every hot tub and swim spa we produce is of the highest quality.

### Choice

We enhance wellness with award-winning hot tubs and swim spas tailored to every customer's needs.

### Care

We put our customers, partners and team members at the heart of everything we do.

### Innovation

Striving for world class design and features with innovation at the forefront with two decades of experience.

## Why choose Platinum Spas

**As a leading brand for over a decade, we continue to innovate and inspire. With hundreds of thousands of satisfied customers worldwide, we remain dedicated to delivering the very best in hot tub technology and wellness.**

From PlatinumRevive to PlatinumPure, PlatinumGuru, and PlatinumMelody, our spas are designed to transform your garden into the ultimate relaxation retreat.

Discover the Platinum Spas collection today and elevate your wellness with world-leading luxury, innovation, and energy efficiency.

## Buying with confidence

### Quality reassurance

With Platinum Spas, you can have confidence in the components used. We are proud to partner with industry leading suppliers to bring you the highest quality hot tubs with the best hydrotherapy experience. Superior Wellness, world's fastest growing hot tub manufacturer, provides the warranty for Platinum Spas.



### Structure with lifetime warranty\*

Hot tubs are often subjected to extreme changes in weather, so having a solid structural frame that doesn't warp, shrink or contract in such harsh conditions is incredibly important while they are supporting vast volumes of water.

All Platinum Spas hot tubs are built around an impressive tubular stainless steel framework, due to its robustness we are proud to give a lifetime warranty\* on its integrity.



# Hand quality craftsmanship

We take care and pride in every hot tub we make with each one uniquely crafted by hand, during the build.

Our skilled teams ensure every detail is to the highest quality standard. Where this isn't possible, we use the latest technologies to maintain our high levels of quality. The stainless steel structure is hand welded for each spa with the fibreglass sprayed and then hand rolled. All plumbing is assembled by hand and manually glued and fitted and some of the jet holes are hand drilled or manually cut. Our brand is consistent with all hot tubs built to the same high standard, but each hot tub is actually custom made with many of the processes by hand.

## Quality and Innovation

Built to last.

Designed in the UK, quality is paramount. Crafted in energy-efficient, state-of-the-art facilities, our hot tubs are built with the finest, most durable materials. Every detail is engineered for performance, ensuring the ultimate in luxury, efficiency, and longevity.

To find your warranty, please visit the Platinum Spas Website.

platinum-spas.com/owner/warranty.

Or scan the QR.



# Platinum Spas Warranty Overview

(UK & EU, from September 2025)

### Quick Comparison Table

Coverage Item	Deluxe Range	Premium Range	Luxury Range	Vacation Range	Swim Spa Range	Mini Pool Range
Shell Structure	Lifetime (10 years)*	Lifetime (10 years)*	Lifetime (10 years)*	5 years	Lifetime (10 years)*	Lifetime (10 years)*
Shell Surface	5 years	5 years	7 years	2 years	5 years	5 years
Control Box & Display / Heater	2 years	2 years	3 years	2 years	2 years	2 years
Pumps (jet & circulation)	2 years	2 years	3 years	2 years	2 years	2 years
Plumbing	2 years	2 years	3 years	2 years	2 years	2 years
Cabinet	1 year	2 years	3 years	1 year	2 years	2 years
Ozone Generator	1 year	2 years	2 years	1 year	2 years	2 years
Audio System	1 year	2 years	2 years	n/a	2 years	n/a
LED Lights	1 year	2 years	2 years	1 year	2 years	2 years
Thermo Cover	2 years	2 years	2 years	1 year	2 years	2 years
Jets	2 years	2 years	2 years	2 years	2 years	2 years
Plastic Components (pillows, cup holders, diverters, waterfall, etc...)	2 years	2 years	2 years	2 years	2 years	2 years

\*Lifetime warranty defined as 10 years.

\*\*Any damage found must be reported within 30 days with images. Any damage not reported in time that worsens may be rejected. In Spain – we adhere to the legal guarantee period of three years.



## Control at your fingertips

We use Balboa as our control system, recognised globally for its high quality and innovation always providing the latest technology. On every Platinum Spas hot tub and swim spa we use Balboa heaters, control panels and control board.

Platinum Spas control panels have WIFI as an option where the customer can control the hot tub from any 5G enabled location. With colour screen and directional key pads users can go through their settings and have their hot tub or swim spa set up perfectly for their needs with ease.

## Platinum spa touch

We are excited to unveil the 7" Platinum spa touch, the latest advancement in our spa touch panel series.

The 7" Platinum spa touch screen offers a stunning, intuitive graphical interface designed to elevate your spa experience. Powered by an Arm® dual-core 800MHz processor with an additional co-processor, this advanced display merges cutting-edge performance with unparalleled ease of use.

With integrated Wi-Fi, you can control your spa remotely from your mobile device, whether you're relaxing at home or travelling around. Manage your settings, monitor performance, and enjoy total control at your fingertips.

Transform your hot tub experience with the next evolution in spa technology.



Hydrophobic Screen



Captive Touch



Built In Wi-Fi



Bluetooth Connectivity



TP500



Spa touch 2T



Platinum Spa touch





## Jet design and formation

**Designed with precision, our hot tub jets are strategically positioned to deliver a full-body hydrotherapy experience, targeting key muscle groups for deep relaxation and relief.**

By perfectly blending air and water, our hydromassage technology delivers targeted relief from stress and lower back pain, while promoting better sleep and aiding post-exercise recovery. It can also help alleviate symptoms of restless leg syndrome, cramps, arthritis, and fibromyalgia, enhancing your overall wellbeing.

A regular hydromassage routine can be more beneficial than you realise.

Seats designed to follow the contours of the body and recessed jets are placed to perfectly match the muscle structure of the human form, which delivers a comfortable, premium hydromassage experience.

### Deluxe range: Serenity meets style

**The Deluxe range delivers the perfect balance of style and function. Featuring six arch jets that are precisely positioned to target key muscle groups, these jets offer gentle yet effective hydrotherapy to ease tension and promote relaxation.**

Additionally, the Deluxe range is enhanced by beautiful fountains, creating a soothing visual and auditory experience. With thoughtful designed headrests, cupholders, and diverters, this range offers a complete sensory retreat.



### Premium and Luxury ranges: Advanced hydrotherapy power

**In our Premium and Luxury ranges, we elevate hydrotherapy with slimline recessed hydrotherapy jets.**

These powerful jets are designed to deliver deep tissue massage and therapeutic relief where you need it most. The infinity fountains and waterfalls in both ranges create a tranquil, flowing water experience, enhancing your relaxation. The luxury designed headrests provide added comfort, ensuring you can fully unwind during each session.





# Energy efficient insulation

Our Platinum Premium Shield\* features on all Platinum Spas hot tubs.

This combines five different types of insulation to retain the heat within the cabinet by the Superior Heatlock Insulation Process (SHIP) providing a considerable difference in the heat retained in the hot tub as well as a reduction in energy costs.

By reflecting the heat back inwards, the wasted heat created by the pumps and other components can be recycled. The heat is then used to help maintain the temperature through heat transfer via the vast amount of plumbing, this assists with the overall running costs.



Image shown below is Deluxe range and features PPS\*

Image shown below is Premium range and features PPS\*



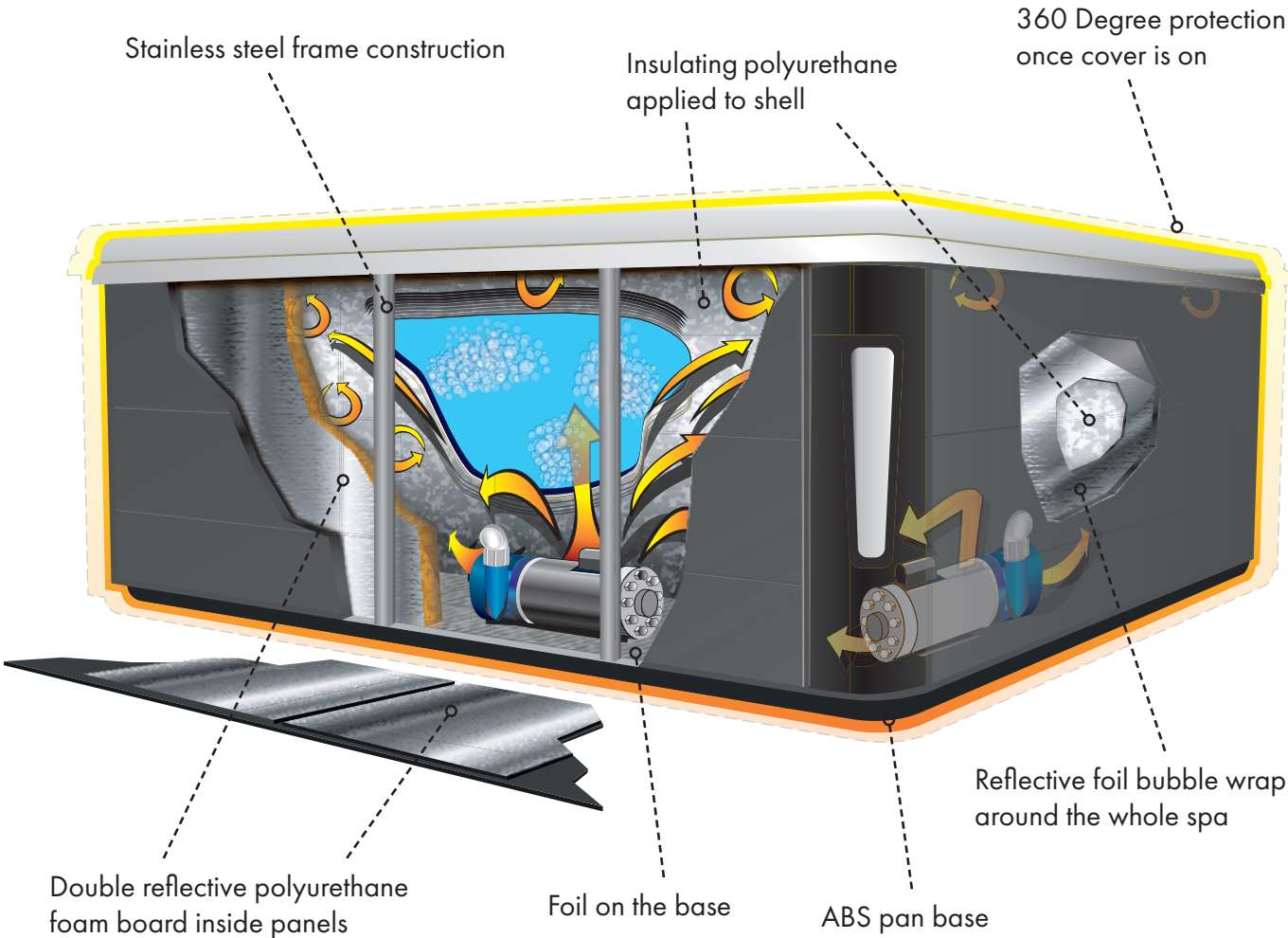
Tested to CEC standards

The manufacturer has certified this product to the California Energy Commission in accordance with California law.

# Platinum Premium Shield explained

- ✓ Floor insulation
- ✓ Side panel insulation
- ✓ Recycle heat-lock

- ✓ 360 Inside foil wrap
- ✓ Insulation foam spray





# Platinum Thermo cover

**Built for safety, efficiency, and all-weather protection.**

**Energy-efficient insulation with polystyrene layers**

Our covers are engineered for outstanding energy efficiency, thanks to multiple layers of high-quality polystyrene foam inside. This advanced insulation minimises heat loss, helping to keep your water warm for longer and reducing energy costs.

**All-Weather durability with weatherproof fabric and polystyrene protection**

Our hot tub covers are built to endure all types of weather, featuring a high-quality weatherproof fabric that withstands rain, snow, and UV rays. The polystyrene layers are carefully wrapped in a polyester bag, which adds an extra layer of durability by protecting against moisture absorption and extending the lifespan of the cover.

**Stainless steel spring support**

For added strength, each cover includes a stainless steel spine in the middle of its structure. This spine reinforces the cover, providing structural support that prevents sagging and keeps it securely in place even in harsh conditions.

**UV and weather protection**

Each cover includes a protective cap that shields it from sun damage, snow, rain, and debris. This protective layer helps prevent fading and material degradation due to prolonged UV exposure, maintaining the look and durability of our weatherproof fabric.

Our hot tub covers are designed for safety, efficiency, and durability in all conditions. With premium materials and reinforced design elements, they offer reliable protection for a clean, energy-efficient, and comfortable hot tub experience year-round.

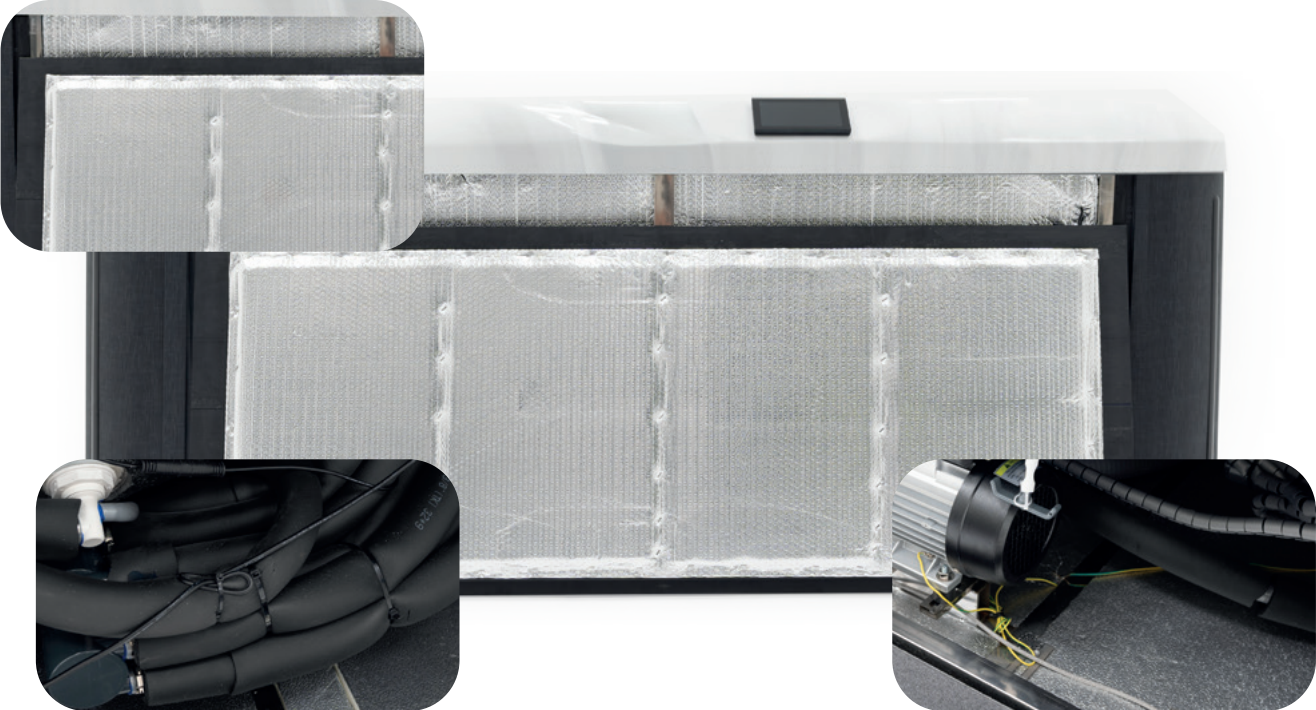


# Platinum Premium Shield Plus

**Only available in our Luxury range, Platinum Premium Shield Plus sets a new standard for efficiency and relaxation, providing a perfectly cosy spa experience while saving you on energy—no matter the season.**

Our Platinum Premium Shield Plus insulation is engineered for unmatched warmth and energy efficiency, exclusive to our Luxury range. This advanced insulation system features:

**Enhanced side panel insulation** with thicker layers, designed to trap and retain warmth efficiently. This prevents heat from escaping through the sides, keeping your water at an ideal temperature longer and lowering energy costs.



**Insulated piping** within the cabinets for consistent performance, even in colder climates. By insulating the internal pipes, we ensure the water flows freely, maintaining optimal heat as it circulates and reducing stress on the heating system.

**Thicker board insulation** on top of a robust foil ABS base, creating an extra layer of protection that minimises heat loss from the base while reinforcing the tub’s structure.



**PlatinumEverBase**

Platinum Spas are built from the ground up, with a rigid pan-base which is made from a tough ABS plastic that is further strengthened with fibreglass giving superb structural integrity along with longevity.

The addition of reflective insulating bubble foil acts as a thermal sock and is designed to eliminate the cold penetrating the inside of the spa by bouncing the cold away.



**PlatinumEverFrame**

Platinum Spas is designed to be used anywhere in the world and to withstand all environments. To meet these challenging demands, the spas are built with a tubular 304 grade stainless steel frame.

By using a stainless-steel frame, the spa is more stable and therefore will not expand, contract, twist or warp in changing temperatures or weather conditions that a hot tub may be subjected to.

Being tubular, EverFrame is perfectly designed to absorb and evenly disseminate the weight of the largest modern hot tub, especially with the vast volumes of water they can hold.



# Platinum innovations

**At the heart of our collection are three pioneering technologies, designed to elevate your spa experience:**

Our Luxury range introduces cutting-edge innovations for a superior spa experience. PlatinumPure, a quadruple-layered purification system using UV, ozone, and mineral ionization for pristine water for you, your family and friends. PlatinumGuru, a real-time water monitoring system, our technology ensures perfect water quality and a deeper sense of wellness with every soak.



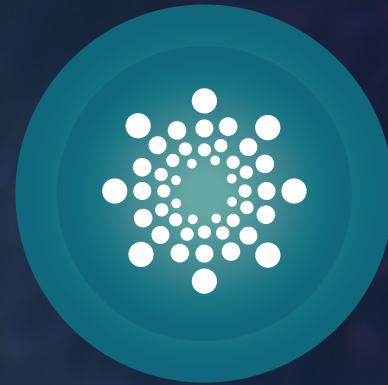


# PlatinumGuru

## Perfect water, always

Exclusive to the Luxury range, continuously tracks water quality, providing real-time feedback to ensure your spa water is always in perfect condition, enhancing your overall wellness.

No more guesswork! Relax in your hot tub knowing that the chemical balance is correct, helping to protect you, your family, your spa and the equipment.



Ensures fresh, clean and clear water every time.



## PlatinumPure

### The pinnacle of water purity

Exclusively crafted for our Luxury range, PlatinumPure sets a new standard in water purification, providing four layers of advanced protection with minimal effort:

**Advanced UV sanitiser:** Eliminates harmful bacteria and viruses, reducing the need for harsh chemicals while maintaining a clean, safe soak.

**Ozone system:** Breaks down organic impurities, ensuring your water remains crystal clear and inviting.

**Ozone mixing chamber:** Maximises the effectiveness of ozone by increasing contact time with the water, enhancing the purity process.

**PlatinumPure mineral ioniser:** Enriches the water with natural minerals, offering longer-lasting cleanliness that's gentle on both skin and the environment.

With PlatinumPure, you'll enjoy pristine water with every soak.

Combining the four powerful elements of PlatinumPure—Advanced UV Sanitiser, Ozone System, Ozone Mixing Chamber, and Mineral Ionizer—with our state-of-the-art filtration system delivers unmatched water quality. This comprehensive approach ensures that every stage of water purification is maximised, from neutralising harmful microorganisms to breaking down organic impurities and infusing the water with natural minerals. The result is crystal-clear, balanced water that remains clean for longer, with fewer chemical additives required. This not only means a safer, more enjoyable soak for you and your family but also less maintenance and more time to relax. With the synergy of PlatinumPure and our advanced filtration system, you can trust that every soak will be as pure and refreshing as the first.



4x the purity giving you the cleanest water to date





### Platinum Illumination

Illumination is a key component of a fulfilling hot tub experience. Chromotherapy is a science and refers to the positive influence lights have on the body and mind.

All Platinum Spas models are fitted with an array of multi-coloured LED lights that can be simply controlled with a push of a button. If you are in the mood to have an individual colour or want our mood lighting where the colours softly fade between each other, the choice is yours.



### Double filtration

**Discover the ultimate in water clarity with Platinum Spas' Double Filtration System. Designed for unmatched performance and efficiency, this innovative system keeps your spa water sparkling clean with minimal effort.**

Our advanced two-filter design ensures every drop of water is perfectly maintained. One filter works exclusively with the circulation pump, providing continuous and reliable filtration. The second filter springs into action when the jets are running, cleaning the water as you relax and enjoy the soothing massage.

These two filters work together to create a larger, more effective filtration area, delivering crystal-clear water while reducing maintenance time. Say goodbye to constant cleaning and hello to uninterrupted relaxation.

Upgrade to a Platinum Spa and experience the luxury of pristine water every time, thanks to our state-of-the-art Double Filtration System. Your perfect soak starts here.



### Smart control at your fingertips

**Imagine the luxury of having your hot tub perfectly prepared and ready to use the moment you step through the door, whether you're arriving home from a busy day at work or returning after a weekend away. With Platinum Spas luxury range cutting-edge Wi-Fi Touch Panel technology, this convenience is no longer a dream but a reality.**

This state-of-the-art feature, seamlessly integrated with the renowned BALBOA® control system, allows you to control and programme your hot tub remotely using your mobile phone or tablet. From adjusting the temperature to setting the filtration cycle or activating the jets, you can customise every detail from virtually anywhere. Whether you're at the office, running, or simply relaxing in another part of your home, the intuitive interface ensures effortless control, putting you in charge of your spa experience.

Platinum Spas' commitment to innovation and convenience means you can enjoy unparalleled luxury with ease. Experience the ultimate in modern spa technology and make every soak a perfectly timed indulgence. Choose Platinum Spas luxury range for a smarter, more connected hot tub experience.







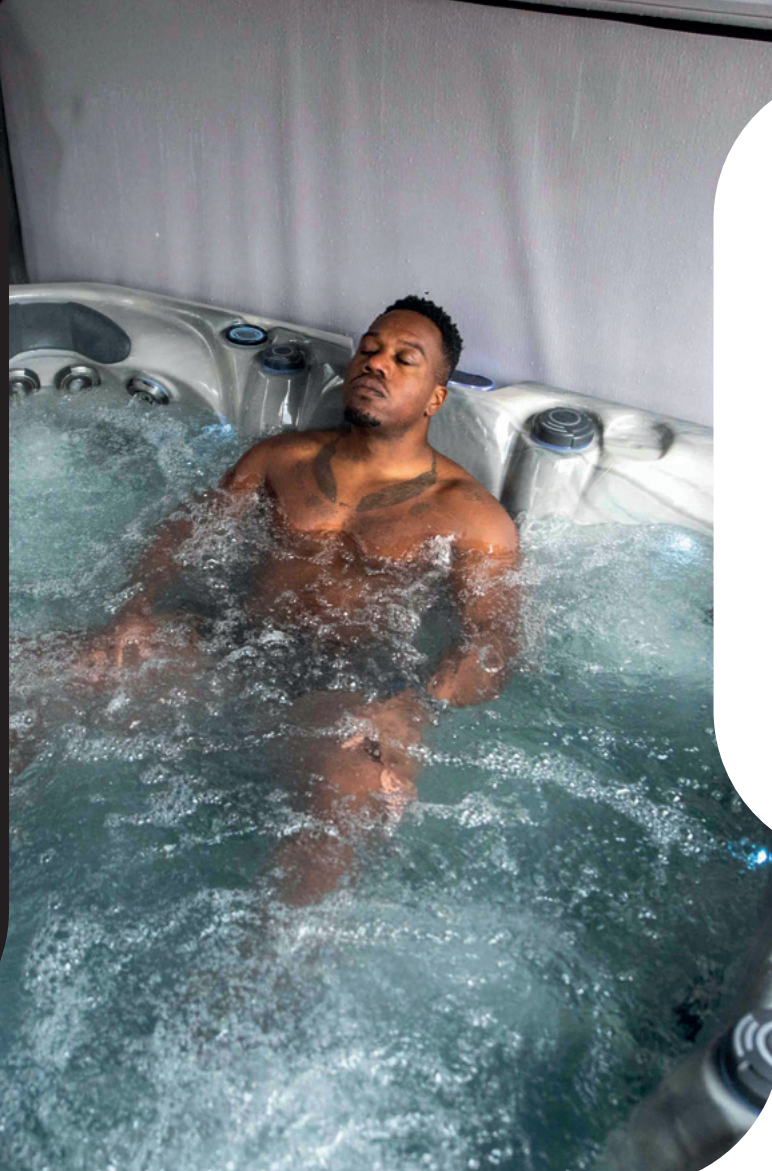
### PlatinumMelody

**There is nothing better than a soothing massage while listening to your favourite music, radio station, podcast or even a book and achieving this has never been easier thanks to our PlatinumMelody system.**

This high-quality Bluetooth system is fitted as standard to the Deluxe and Premium models and is very simply to use. Simply search, then connect your smartphone or model device to the hot tubs Bluetooth and away you go.

#### Luxury models, Immersive sound experience

Elevate your relaxation with the integrated sound system in every Platinum Spas Luxury range hot tub. Featuring integrated music system within the control panel, two high-quality speakers, a powerful subwoofer, and two advanced transducers speakers, this system transforms your hot tub into a full-body auditory experience. The transducers turn the hot tub shell into a resonating speaker, allowing you not only to hear your favourite music but to feel it pulse through your body as you soak. Whether you're unwinding to gentle melodies or energising beats, Platinum Spas creates a unique sensory experience where sound and water unite for ultimate relaxation.



### PlatinumHydromassage

**Hydrotherapy is one of the main reasons why people purchase a hot tub. It's important to offer a variety of jet configurations, and therefore each seat within our Platinum Spas hot tubs offer different styles and layouts of jets.**

From reverse mould shoulder jets, to larger pulsating back jets and even powerful foot jets for great reflexology we have designed seats to produce a massage for every requirement.

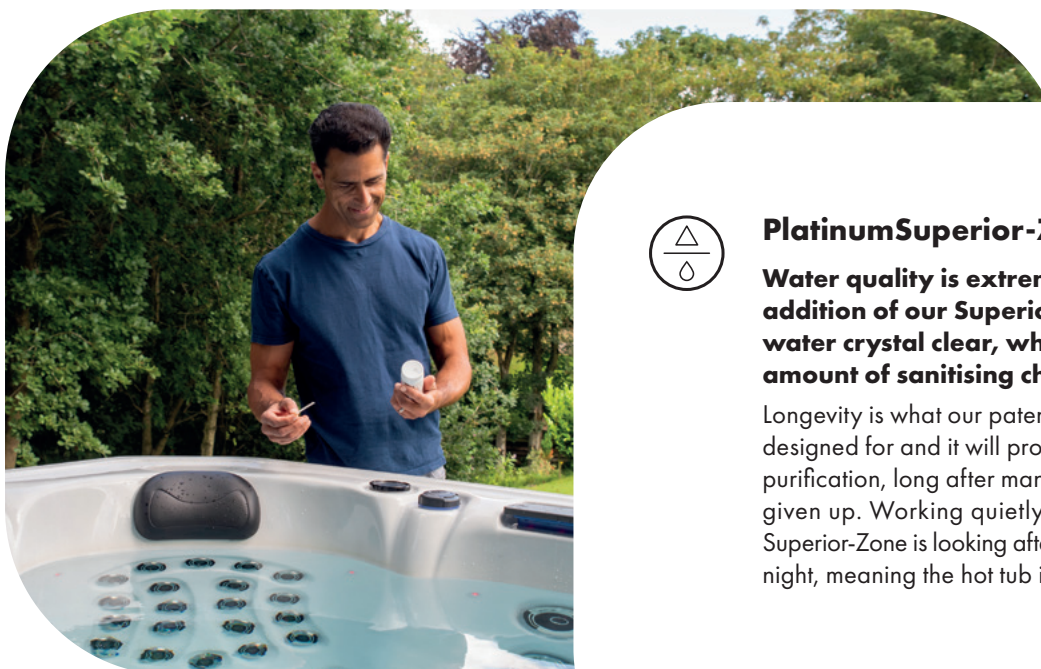
We feel that you should be in control of the massage you receive, so each jet can be turned up or down to allow the pressure you want. We also have Air Valve controls to introduce air into the water stream which makes the jets more powerful or you can reduce it for a subtler massage.



### PlatinumSuperior-Zone

**Water quality is extremely important and the addition of our Superior-Zone helps keep your water crystal clear, whilst also reducing the amount of sanitising chemicals used.**

Longevity is what our patented ozone has been designed for and it will provide years of worry-free purification, long after many ozone generators have given up. Working quietly in the background, our Superior-Zone is looking after your water both day and night, meaning the hot tub is ready to use at any time.



### PlatinumLiquidEffects

**Relaxation comes from many forms and there is nothing better or more relaxing when looking at a waterfall or fountains and enjoying the sound they project.**

We have taken inspiration from these to produce a variety of liquid effects to enhance your soak time and relaxation. With pop up fountains and wide waterfalls offering different visual and sounds effects.

For the night time bather, we have added Platinum Illumination so you can take advantage of wonderful fountains and waterfalls as all Liquid Effect features are backlit enabling you to view the stunning dancing water.



## River jets

**Swim spas with jets offer an affordable and versatile solution for fitness, relaxation, and entertainment, making them an ideal choice for families and individuals seeking a multifunctional water feature.**

Powered by strategically placed high-pressure jets, these swim spas create a strong, adjustable current that allows users to swim in place, perform resistance exercises, or enjoy hydrotherapy massages. The compact size of swim spas with jets makes them perfect for smaller spaces, while their lower cost compared to propulsion-based swim spas ensures accessibility for a broader range of budgets. Whether you're a casual swimmer or simply looking for a therapeutic retreat, swim spas with jets deliver the flexibility to meet your needs.

In addition to fitness benefits, swim spas with jets provide a relaxing and rejuvenating experience that enhances overall well-being. The jets can double as massage features, targeting sore muscles and promoting relaxation after a workout or a long day. The adjustable speed and pressure settings cater to all skill levels, ensuring a personalised experience for swimmers and non-swimmers alike. With their compact design and dual-purpose functionality, swim spas with jets are an excellent investment, offering year-round enjoyment and the convenience of a spa-like experience in your own garden.



## Swim spa tether

**A swim spa tether is a cost-effective accessory that enables stationary swimming by attaching a harness or belt to a flexible cord anchored in the swim spa.**

It's ideal for smaller spas or those without built-in current systems, offering resistance for low-impact workouts and endurance training.

Lightweight, easy to install, and adjustable for all skill levels, tethers provide an affordable way to enhance fitness and technique. Perfect for swimmers seeking a practical and joint-friendly exercise solution, a swim spa tether maximises the functionality of your spa with minimal effort.



## Turbine system

Swim spas and mini pools with turbine systems offer a premium and highly effective solution for fitness enthusiasts and serious swimmers, delivering a smooth and consistent water current that closely replicates open-water conditions. Unlike jet systems, turbines create a wide, turbulence-free flow of water, providing a natural and immersive swimming experience. The advanced technology allows for precise adjustments to the current's speed and intensity, catering to all levels, from casual swimmers to competitive athletes. With their superior performance and innovative design, turbine-powered swim spas are the ideal choice for those seeking professional-grade aquatic training in the comfort of their home.

Beyond their fitness benefits, swim spas with turbine systems are designed for relaxation and quiet operation, offering a more tranquil and enjoyable environment. The even and laminar water flow ensures a consistent resistance across the swim area, making exercises and swimming more effective and comfortable. Turbine systems are also energy-efficient, reducing operational costs while maintaining top performance. With their sleek aesthetics, low noise, and unmatched functionality, turbine-powered swim spas combine luxury and practicality, making them an outstanding addition to any garden or outdoor living space.



## Turbine speed level control system

**The turbine speed level control system offers unmatched precision and versatility, allowing swimmers to customise their experience to suit their fitness goals and skill levels.**

With adjustable speed settings, users can effortlessly tailor the water current to their needs, whether they're engaging in light aquatic therapy, moderate cardio, or intensive swim training. The turbine generates a wide, smooth, and turbulence-free current that closely mimics open-water conditions, ensuring a natural and immersive swimming experience at every speed. This level of control makes it ideal for households with multiple users, as everyone can find a setting that perfectly matches their comfort and ability.

Beyond performance, the speed control system enhances convenience and usability. Adjustments are typically made through an intuitive interface, allowing swimmers to easily change speeds without disrupting their workout. The turbine operates quietly and efficiently, creating a serene environment while reducing energy consumption. Whether you're a beginner building endurance or a seasoned athlete refining your technique, the turbine speed control delivers an unparalleled balance of functionality and luxury, making it an essential feature for a high-end swim spa.





# The Platinum Spas collection

## Unrivalled Luxury, Innovation, and Wellness

Welcome to the Platinum Spas collection, where hot tubs, swim spas, design and technology reach new heights. With innovation at our core, Platinum Spas has sold hundreds of thousands of hot tubs and swim spas to satisfied customers worldwide.

As industry leaders for over a decade, we are experts in relaxation and hydrotherapy, committed to enhancing your wellness routine with cutting-edge features and unrivalled comfort.

## We put our customers at the heart of everything we do and strive to go beyond expectations.

We are here to support you every step of the way and advise you on how to look after your hot tub so you can enjoy it for many years to come. Refer back to your hot tub manual for troubleshooting issues and the chemical guide for maintenance tips. Alternatively, take a look at our Frequently Asked Questions for answers to our most popular questions.

For more advice, information, manuals and guides, please visit our website at [platinum-spas.com](https://platinum-spas.com)





# Deluxe range

**Classic comfort with modern innovation**  
For those seeking performance and comfort, the Deluxe range offers essentials with modern enhancements:

**Precision-controlled hydrotherapy:**  
Customisable jets for tailored massage experiences, available across all ranges

**Intuitive controls:** Easily manage settings with simple controls, available across all ranges.

**Timeless design:** Classic features with modern updates for a luxurious experience.

**LED mood lighting:** Enhances the spa's ambience, available across all ranges.

**Deluxe models:** Refresh, Happy, Palma, Tahiti, Seville, St. Tropez and Reims.

## Shell colour options



## Side panel at a glance



\*Reims and St.Tropez only available in this colour.



We have certified this product to the California Energy Commission in accordance with California law



## Happy



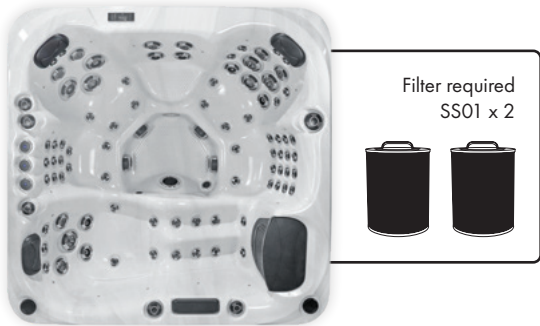
Deluxe steps

People	Dimensions	Total jets	Power supply	
5	2,000 x 2,000 x 900 mm	47	32 Amp	
Seat layout	Control	Heater	Pumps	Circulation pump
3 seats + 2 loungers	TP500	3 kw	2 x 2 HP	1 x 0.35 HP
Dry weight	Filled weight	Avg spa Water capacity		
304 kg / 670 lbs	1,304 kg / 2,875 lbs	1,000 L / 264 Gallons		





Palma



Deluxe steps

People	Dimensions	Total jets	Power supply
6	2,000 x 2,000 x 900 mm	83	32 Amp

Seat layout	Control	Heater	Pumps	Circulation pump
5 seats + 1 lounger	TP500	3 kw	2 x 3 HP	1 x 0.35 HP

Dry weight	Filled weight	Avg spa Water capacity
336 kg / 741 lbs	1,336 kg / 2,945 lbs	1,000 L / 264 Gallons

Reims



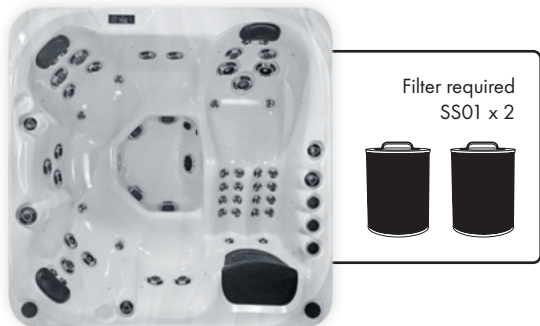
Deluxe steps

People	Dimensions	Total jets	Power supply
6	2,000 x 2,000 x 800 mm	25	13 Amp

Seat layout	Control	Heater	Pumps	Circulation pump
5 seats + 1 lounger	TP500	2 kw	1 x 2 HP	1 x 0.35 HP

Dry weight	Filled weight	Avg spa Water capacity
258 kg / 569 lbs	1,258 kg / 2,773 lbs	1,000 L / 264 Gallons

Refresh



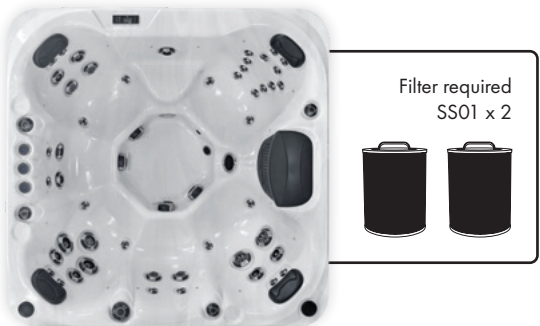
Deluxe steps

People	Dimensions	Total jets	Power supply
6	2,000 x 2,000 x 900 mm	49	32 Amp

Seat layout	Control	Heater	Pumps	Circulation pump
5 seats + 1 lounger	TP500	3 kw	2 x 2 HP	1 x 0.35 HP

Dry weight	Filled weight	Avg spa Water capacity
306 kg / 675 lbs	1,306 kg / 2,879 lbs	1,000 L / 264 Gallons

Seville



Deluxe steps

People	Dimensions	Total jets	Power supply
7	2,000 x 2,000 x 900 mm	48	32 Amp

Seat layout	Control	Heater	Pumps	Circulation pump
7 seats	TP500	3 kw	2 x 2 HP	1 x 0.35 HP

Dry weight	Filled weight	Avg spa Water capacity
306 kg / 675 lbs	1,306 kg / 2,879 lbs	1,000 L / 264 Gallons



St Tropez



Deluxe steps

People	Dimensions	Total jets	Power supply
7	2,000 x 2,000 x 800 mm	25	13 Amp

Seat layout	Control	Heater	Pumps	Circulation pump
7 seats	TP500	2 kw	1 x 2 HP	1 x 0.35 HP

Dry weight	Filled weight	Avg spa Water capacity
258 kg / 569 lbs	1,258 kg / 2,773 lbs	1,000 L / 264 Gallons

Tahiti



Deluxe steps

People	Dimensions	Total jets	Power supply
3	2,130 x 1,650 x 870 mm	36	13 Amp

Seat layout	Control	Heater	Pumps	Circulation pump
2 seats + 1 lounger	TP500	2 kw	1 x 2 HP	1 x 0.35 HP

Dry weight	Filled weight	Avg spa Water capacity
251 kg / 553 lbs	1,151 kg / 2,538 lbs	900L / 238 Gallons





# Premium range

### Redefined for 2025

The Premium range offers elegance and advanced features:

**Advanced hydrotherapy Jets:** Powerful, targeted jets for soothing massages, available across all ranges.

**Ergonomic headrests:** Optimal comfort for total relaxation

**Crystal-clear sound system:** Enjoy high-quality audio with enhanced speakers.

**Waterfall feature:** A calming cascade adds to the peaceful ambience.

**LED mood lighting:** Enhances the atmosphere for complete relaxation and is available across all ranges.

**Intuitive controls:** Easily manage settings with intuitive controls, available across all ranges.

**Premium models:** Santorini, Kenya, Colombo, Tokyo, Barcelona, Oslo, Onyx, Topaz, Maximus.

### Shell colour options



### Side panel at a glance



\*Lounge Divine Plus only available in this colour.



We have certified this product to the California Energy Commission in accordance with California law



## Barcelona



Filter required  
SS01 x 2



Premium steps

People	Dimensions	Total jets	Power supply
5	2,230 x 2,230 x 940 mm	86	32 Amp

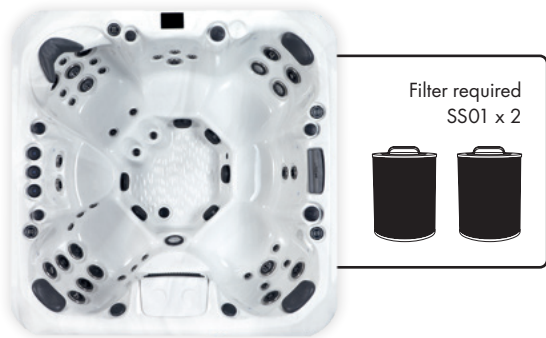
Seat layout	Control	Heater	Pumps	Circulation pump
3 seats + 2 loungers	Spa Touch 2T	3 kw	3 x 3 HP	1 x 0.35 HP

Dry weight	Filled weight	Avg spa Water capacity
490 kg / 1,080 lbs	1,740 kg / 3,836 lbs	1,250 L / 330 Gallons





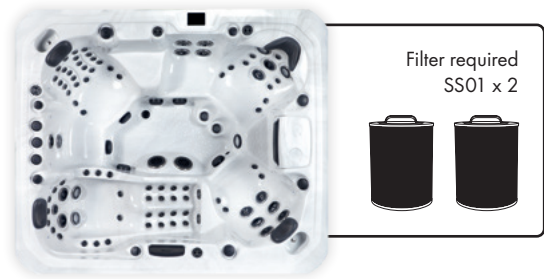
Colombo



Premium steps

People	Dimensions	Total jets	Power supply	
7	2,100 x 2,100 x 950 mm	48	32 Amp	
Seat layout	Control	Heater	Pumps	Circulation pump
7 seats	Spa Touch 2T	3 kw	2 x 2 HP	1 x 0.35 HP
Dry weight	Filled weight	Avg spa Water capacity		
380 kg / 838 lbs	1,535 kg / 3,384 lbs	1,154 L / 305 Gallons		

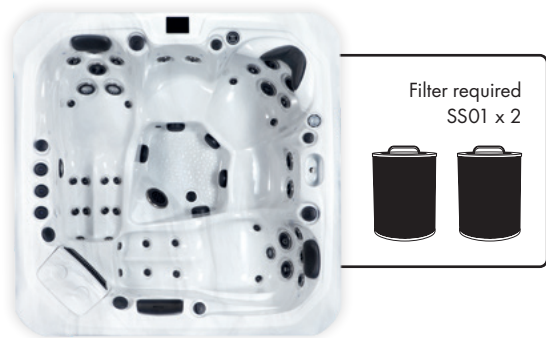
Maximus



Premium steps

People	Dimensions	Total jets	Power supply	
6	2,600 x 2,200 x 980 mm	99	40 Amp	
Seat layout	Control	Heater	Pumps	Circulation pump
5 seats + 1 lounger	Spa Touch 2T	3 kw	2 x 2 HP 2 x 3 HP	1 x 0.35 HP
Dry weight	Filled weight	Avg spa Water capacity		
510 kg / 1,124 lbs	2,100 kg / 4,629 lbs	1,590 L / 420 Gallons		

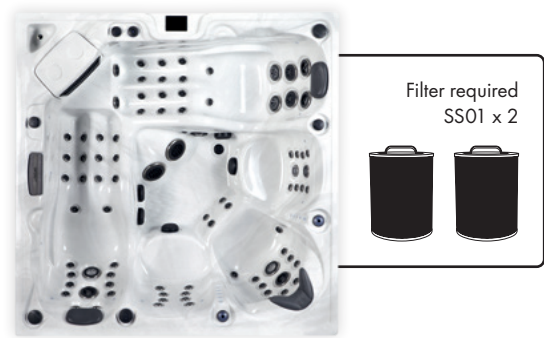
Kenya



Premium steps

People	Dimensions	Total jets	Power supply	
5	2,100 x 2,100 x 940 mm	52	32 Amp	
Seat layout	Control	Heater	Pumps	Circulation pump
3 seats + 2 loungers	Spa Touch 2T	3 kw	2 x 3 HP	1 x 0.35 HP
Dry weight	Filled weight	Avg spa Water capacity		
450 kg / 992 lbs	1,604 kg / 3,536 lbs	1,154 L / 305 Gallons		

Onyx



Premium steps

People	Dimensions	Total jets	Power supply	
5	2,200 x 2,200 x 940 mm	90	40 Amp	
Seat layout	Control	Heater	Pumps	Circulation pump
3 seats + 2 loungers	Spa Touch 2T	3 kw	4 x 2 HP	1 x 0.35 HP
Dry weight	Filled weight	Avg spa Water capacity		
490 kg / 1,080 lbs	1,740 kg / 3,836 lbs	1,250 L / 330 Gallons		



Oslo



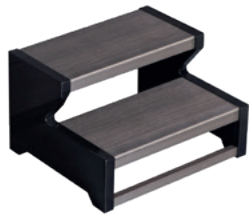
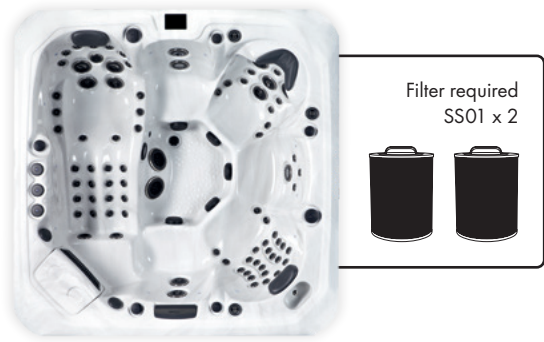
Premium steps

People	Dimensions	Total jets	Power supply
7	2,300 x 2,300 x 950 mm	64	32 Amp

Seat layout	Control	Heater	Pumps	Circulation pump
7 seats	Spa Touch 2T	3 kw	3 x 3 HP	1 x 0.35 HP

Dry weight	Filled weight	Avg spa Water capacity
490 kg / 1,080 lbs	1,740 kg / 3,836 lbs	1,250 L / 330 Gallons

Tokyo



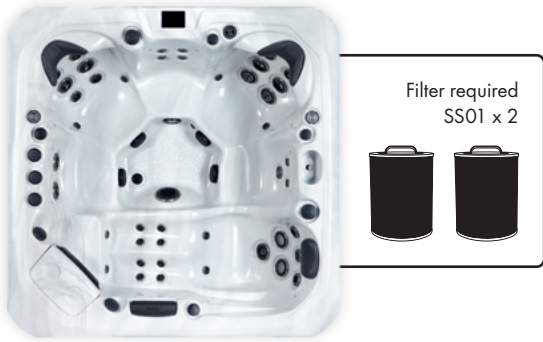
Premium steps

People	Dimensions	Total jets	Power supply
6	2,230 x 2,230 x 940 mm	89	32 Amp

Seat layout	Control	Heater	Pumps	Circulation pump
5 seats + 1 lounger	Spa Touch 2T	3 kw	3 x 3 HP	1 x 0.35 HP

Dry weight	Filled weight	Avg spa Water capacity
490 kg / 1,080 lbs	1,740 kg / 3,836 lbs	1,250 L / 330 Gallons

Santorini



Premium steps

People	Dimensions	Total jets	Power supply
6	2,100 x 2,100 x 940 mm	52	32 Amp

Seat layout	Control	Heater	Pumps	Circulation pump
5 seats + 1 lounger	Spa Touch 2T	3 kw	2 x 3 HP	1 x 0.35 HP

Dry weight	Filled weight	Avg spa Water capacity
450 kg / 992 lbs	1,604 kg / 3,536 lbs	1,154 L / 305 Gallons

Topaz



Premium steps

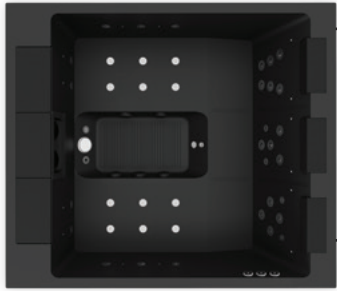
People	Dimensions	Total jets	Power supply
3	2,200 x 1,560 x 900 mm	64	32 Amp

Seat layout	Control	Heater	Pumps	Circulation pump
1 seats + 2 loungers	Spa Touch 2T	3 kw	2 x 3 HP	1 x 0.35 HP

Dry weight	Filled weight	Avg spa Water capacity
250 kg / 551 lbs	1,045 kg / 2,304 lbs	795 L / 210 Gallons



Lounge  
Divine Plus



Premium steps

People	Dimensions	Total jets	Power supply
3	2,200 x 1,900 x 800 mm	42	32 Amp

Seat layout	Control	Heater	Pumps	Circulation pump
1 seats + 2 loungers	Spa Touch 3 3 x AX10	3 kw	2 x 3 HP	1 x 0.35 HP





# Luxury range

**The ultimate in perfection**  
For those who demand the best, the Luxury range represents the pinnacle of spa craftsmanship and technology:

**PlatinumPure quadruple purity:** Also exclusive to the Luxury range, UV sanitisation, Ozone, and the PlatinumPure Mineral Ioniser deliver the cleanest water possible.

**7" Personalised Platinum\* spa touch:**  
Intuitive controls allow effortless adjustment of your spa settings.

**PlatinumMelody sound system:** Experience top-tier audio with a subwoofer, Transducers, Balboa BBA amplifier, and premium speakers.

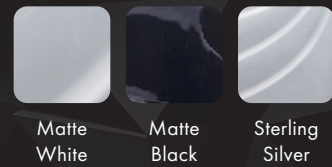
**LED corner panels:** Ambient lighting adds to the spa's atmosphere.

**Wi-Fi enabled:** Control your spa from anywhere with built-in Wi-Fi.

**PlatinumGuru:** Ensures your water remains in perfect condition.

**Luxury models:** Capri, Florence, Sicily, Positano, Portofino and Palermo.

## Shell colour options



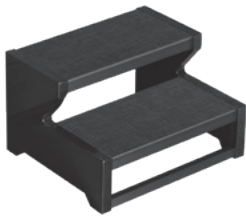
## Side panel at a glance



We have certified this product to the California Energy Commission in accordance with California law



## Capri



Luxury steps

People	Dimensions	Total jets	Power supply	
4	2,000 x 1,700 x 930 mm	49	32 Amp	
Seat layout	Control	Heater	Pumps	Circulation pump
4 seats	Platinum Spa Touch 4+	3 kw	2 x 3 HP	1 x 0.35 HP
Dry weight		Filled weight	Avg spa Water capacity	
360 kg / 794 lbs		1,155 kg / 2,546 lbs	795 L / 210 Gallons	





Florence



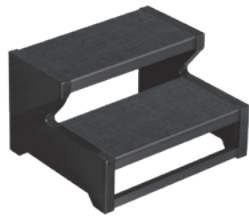
Luxury steps

People	Dimensions	Total jets	Power supply
6	2,000 x 2,000 x 940 mm	67	32 Amp

Seat layout	Control	Heater	Pumps	Circulation pump
5 seats + 1 lounger	Platinum Spa Touch 4+	3 kw	2 x 3 HP	1 x 0.35 HP

Dry weight	Filled weight	Avg spa Water capacity
430 kg / 948 lbs	1,527 kg / 3,366 lbs	1,097 L / 290 Gallons

Portofino



Luxury steps

People	Dimensions	Total jets	Power supply
5	2,300 x 2,300 x 950 mm	66	32 Amp

Seat layout	Control	Heater	Pumps	Circulation pump
4 seats + 1 lounger	Platinum Spa Touch 4+	3 kw	3 x 3 HP	1 x 0.35 HP

Dry weight	Filled weight	Avg spa Water capacity
510 kg / 1,124 lbs	1,760 kg / 3,880 lbs	1,250 L / 330 Gallons

Palermo



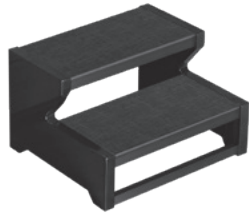
Luxury steps

People	Dimensions	Total jets	Power supply
6	2,300 x 2,300 x 950 mm	61	32 Amp

Seat layout	Control	Heater	Pumps	Circulation pump
6 seats	Platinum Spa Touch 4+	3 kw	3 x 3 HP	1 x 0.35 HP

Dry weight	Filled weight	Avg spa Water capacity
510 kg / 1,124 lbs	1,760 kg / 3,880 lbs	1,250 L / 330 Gallons

Positano



Luxury steps

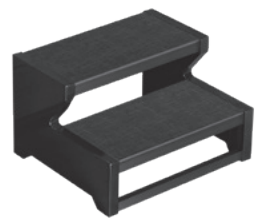
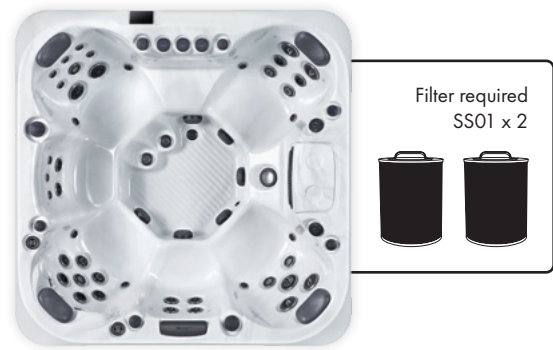
People	Dimensions	Total jets	Power supply
5	2,100 x 2,100 x 940 mm	62	32 Amp

Seat layout	Control	Heater	Pumps	Circulation pump
4 seats + 1 lounger	Platinum Spa Touch 4+	3 kw	2 x 3 HP	1 x 0.35 HP

Dry weight	Filled weight	Avg spa Water capacity
450 kg / 992 lbs	1,605 kg / 3,538 lbs	1,155 L / 305 Gallons



Sicily



Luxury steps

People	Dimensions	Total jets	Power supply
6	2,100 x 2,100 x 940 mm	50	32 Amp

Seat layout	Control	Heater	Pumps	Circulation pump
6 seats	Platinum Spa Touch 4+	3 kw	2 x 3 HP	1 x 0.35 HP

Dry weight	Filled weight	Avg spa Water capacity
450 kg / 992 lbs	1,605 kg / 3,538 lbs	1,155 L / 305 Gallons

# Introducing Matte Acrylic

The all-new Matte Black and Matte White finish is now available across the entire Platinum Spas Luxury Range.

Striking, modern, and unapologetically luxurious — this is the colour trend defining high-end outdoor living in 2025. From first glance, it commands attention.

Matte Acrylic is already becoming the go-to choice for those who want their spa to stand out — not blend in. And it's not just beautiful. It's smarter, too.

Each Matte Acrylic model is made using AVONITE™ Flex by Trinseo. A next-generation surface material offering:

- 2x the slip resistance of traditional glossy acrylic
- Enhanced grip for safer, more relaxing use
- UV stability to resist fading and surface degradation
- Durable thermoformed finish for sharper detailing and long-term performance



Matte White



Matte Black





# Platinum swim spa

## Ultimate in fitness and relaxation

Elevate your wellness with Platinum swim spas, where fitness and luxury combine in one exceptional package. Designed for all abilities, our swim spas provide a versatile aquatic experience—whether you’re swimming against an adjustable current for a full-body workout, relaxing with hydrotherapy, or enjoying family fun. With powerful swim currents, advanced jet systems, and spacious layouts, Platinum swim spas offer the perfect blend of exercise, therapy, and leisure. Transform your garden into a year-round retreat for fitness and relaxation, tailored to your lifestyle.

### Shell colour



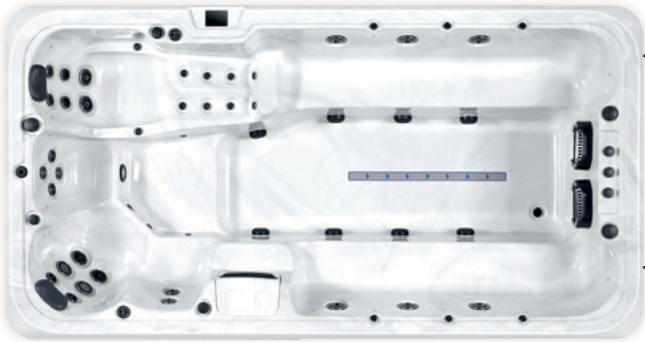
### Side panel at a glance



### Titan



Swim Spa steps



Filter required  
SS01 x 2



People	Dimensions	Total jets	Power supply
1 - 10	4,300 x 2,250 x 1,200 mm	38	40 Amp

Seat layout	Control	Heater	Pumps	S Pumps	Circulation pump
9 seats + 1 lounger	Spa Touch 2T	3 kw	2 x 2 HP	2 x 3 HP	1 x 0.35 HP

Dry weight	Filled weight	Avg spa Water capacity
920 kg / 2,028 lbs	5,120 kg / 11,287 lbs	4,200 L / 1,109 Gallons



Eros



Swim Spa steps



People	Dimensions	Total jets	Power supply
1 - 3	4,500 x 2,250 x 1,500 mm	22	40 Amp

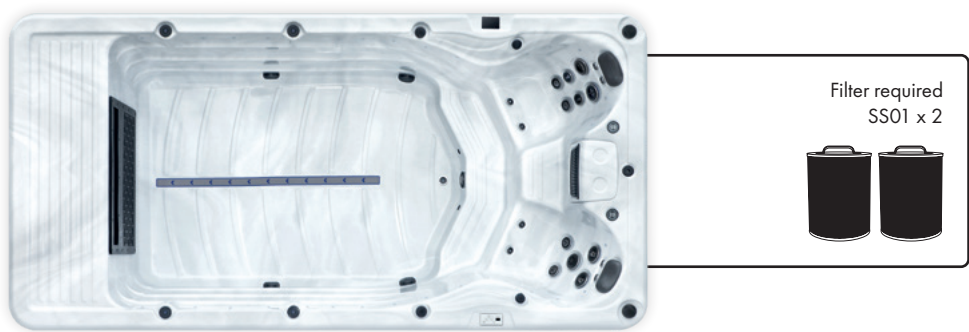
Seat layout	Control	Heater	Pumps	S Pumps	Circulation pump
2 seats	Spa Touch 2T	3 kw	1 x 3 HP	3 x 3 HP	1 x 1 HP

Dry weight	Filled weight	Avg spa Water capacity
935 kg / 2,061 lbs	7,735 kg / 17,052 lbs	6,800 L / 1,796 Gallons

Eros Pro



Swim Spa steps



People	Dimensions	Total jets	Power supply
1 - 3	4,500 x 2,250 x 1,500 mm	19	1 x 20 Amp 1 x 32 Amp

Seat layout	Control	Heater	Pumps	S Pumps	Circulation pump
2 seats	Spa Touch 2T	3 kw	1 x 3 HP	Turbine	1 x 1 HP

Dry weight	Filled weight	Avg spa Water capacity
960 kg / 2,116 lbs	6,760 kg / 14,903 lbs	5,800 L / 1,532 Gallons

Helios



Swim Spa steps



People	Dimensions	Total jets	Power supply
1 - 5	5,900 x 2,250 x 1,500 mm	53	1 x 20 Amp 1 x 32 Amp

Seat layout	Control	Heater	Pumps	S Pumps	Circulation pump
4 seats + 1 lounger	Spa Touch 2T	3 kw	2 x 2 HP	3 x 3 HP	2 x 0.35 HP

Dry weight	Filled weight	Avg spa Water capacity
1,450 kg / 3,196 lbs	11,950 kg / 26,345 lbs	10,500 L / 2,774 Gallons

Helios Pro



Swim Spa steps



People	Dimensions	Total jets	Power supply
1 - 5	5,900 x 2,250 x 1,500 mm	53	1 x 40 Amp* 1 x 32 Amp

Seat layout	Control	Heater	Pumps	S Pumps	Circulation pump
4 seats + 1 lounger	Spa Touch 2T	3 kw	2 x 2 HP	Turbine	2 x 0.35 HP

Dry weight	Filled weight	Avg spa Water capacity
1,475 kg / 3,251 lbs	10,975 kg / 24,195 lbs	9,500 L / 2,509 Gallons

\*Please note a consumer unit will need to be fitted inside the swim spa to split the 40a supply for both boards



Zelus



Swim Spa steps



People	Dimensions	Total jets	Power supply
1 - 3	5,700 x 2,250 x 1,500 mm	42	40 Amp

Seat layout	Control	Heater	Pumps	S Pumps	Circulation pump
2 seats + 1 lounger	Spa Touch 2T	3 kw	1 x 3 HP	3 x 3 HP	1 x 1 HP

Dry weight	Filled weight	Avg spa Water capacity
1,350 kg / 2,976 lbs	11,150 kg / 24,581 lbs	9,800 L / 2,588 Gallons

Zelus Pro



Swim Spa steps



People	Dimensions	Total jets	Power supply
1 - 3	5,700 x 2,250 x 1,500 mm	39	1 x 20 Amp 1 x 32 Amp

Seat layout	Control	Heater	Pumps	S Pumps	Circulation pump
2 seats + 1 lounger	Spa Touch 2T	3 kw	1 x 3 HP	Turbine	1 x 1 HP

Dry weight	Filled weight	Avg spa Water capacity
1,380 kg / 3,042 lbs	10,180 kg / 22,443 lbs	8,800 L / 2,324 Gallons





# Platinum Mini Pools

## Fully in-build mini pools.

The perfect balance of luxury, relaxation, and practicality with our mini pools.

These compact yet elegant mini pools are designed to fit seamlessly into any inground designed outdoor space, offering a refreshing retreat right in your garden. Whether you're looking for a peaceful place to unwind, a stylish centrepiece for entertaining, or a versatile aquatic feature for your family to enjoy, mini pools deliver endless possibilities.

### Benefits of a Mini Pool

#### Space-saving design

Perfect for small gardens, courtyards, or urban spaces, mini pools fit seamlessly into areas where a full-sized pool may not be practical.

#### Versatility

Ideal for relaxation, light exercise, or cooling off during warm weather. Their compact size allows them to suit various uses and family needs.

#### Ease of maintenance

With a smaller water volume than traditional pools, mini pools require less cleaning, fewer chemicals, and lower overall maintenance effort.

#### Cost-effective luxury

Mini pools offer a luxurious addition to your home at a fraction of the installation and operational costs of a full-sized pool, while still enhancing your property's value.

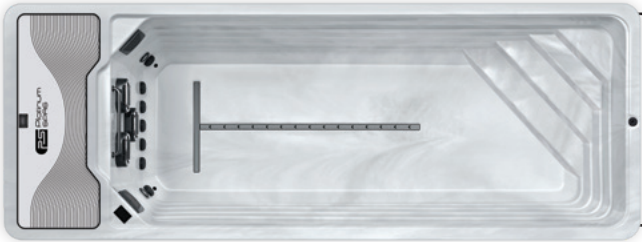
### Shell colour



Sterling Silver



Atlas



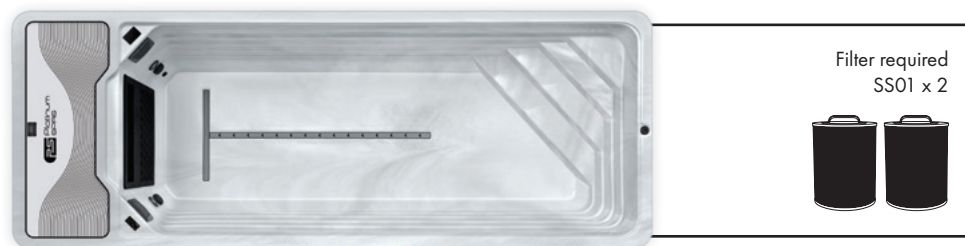
People	Dimensions	Total jets	Power supply
N/A	6,000 x 2,250 x 1,500 mm	3	32 Amp

Seat layout	Control	Heater	Pumps	S Pumps	Circulation pump
N/A	Spa Touch 2T	3 kw	N/A	3 x 3 HP	1 x 1 HP

Dry weight	Filled weight	Avg spa Water capacity
1,570 kg / 3,461 lbs	12,220 kg / 26,940 lbs	10,650 L / 2,813 Gallons



## Atlas Pro

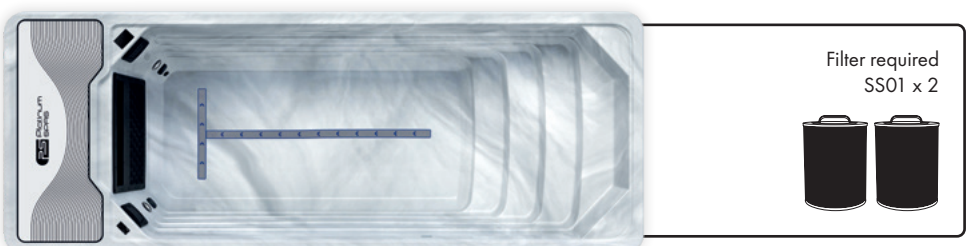


People	Dimensions	Total jets	Power supply
N/A	6,000 x 2,250 x 1,500 mm	0	1 x 20 Amp 1 x 32 Amp

Seat layout	Control	Heater	Pumps	S Pumps	Circulation pump
N/A	Spa Touch 2T	3 kw	N/A	Turbine	1 x 1 HP

Dry weight	Filled weight	Avg spa Water capacity
1,592 kg / 3,509 lbs	12,542 kg / 27,650 lbs	10,950 L / 2,892 Gallons

## Chronos Pro

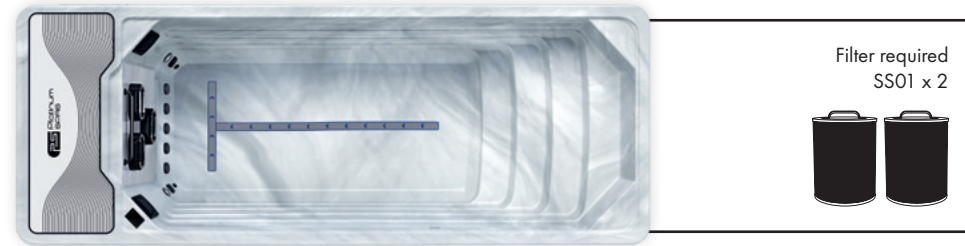


People	Dimensions	Total jets	Power supply
N/A	6,000 x 2,250 x 1,500 mm	0	1 x 20 Amp 1 x 32 Amp

Seat layout	Control	Heater	Pumps	S Pumps	Circulation pump
N/A	Spa Touch 2T	3 kw	N/A	Turbine	1 x 1 HP

Dry weight	Filled weight	Avg spa Water capacity
1,600 kg / 3,527 lbs	11,900 kg / 26,235 lbs	10,300 L / 2,720 Gallons

## Chronos



People	Dimensions	Total jets	Power supply
N/A	6,000 x 2,250 x 1,500 mm	3	32 Amp

Seat layout	Control	Heater	Pumps	S Pumps	Circulation pump
N/A	Spa Touch 2T	3 kw	N/A	3 x 3 HP	1 x 1 HP

Dry weight	Filled weight	Avg spa Water capacity
1,580 kg / 3,483 lbs	11,580 kg / 25,529 lbs	10,000 L / 2,641 Gallons

## Hades



People	Dimensions	Total jets	Power supply
N/A	6,000 x 2,250 x 1,500 mm	3	32 Amp

Seat layout	Control	Heater	Pumps	S Pumps	Circulation pump
N/A	Spa Touch 2T	3 kw	N/A	3 x 3 HP	1 x 1 HP

Dry weight	Filled weight	Avg spa Water capacity
1,560 kg / 3,439 lbs	12,560 kg / 27,690 lbs	11,000 L / 2,905 Gallons



Hades Pro

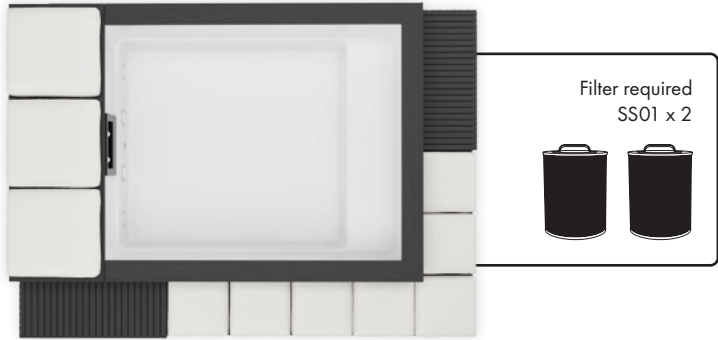


People	Dimensions	Total jets	Power supply
N/A	6,000 x 2,250 x 1,500 mm	0	1 x 20 Amp 1 x 32 Amp

Seat layout	Control	Heater	Pumps	S Pumps	Circulation pump
N/A	Spa Touch 2T	3 kw	N/A	Turbine	1 x 1 HP

Dry weight	Filled weight	Avg spa Water capacity
1,585 kg / 3,494 lbs	12,885 kg / 26,498 lbs	11,300 L / 2,985 Gallons

Mirage



People	Dimensions	Total jets	Power supply
N/A	3,000 x 2,000 x 700 mm	4	16 Amp

Seat layout	Control	Heater	Pumps	Circulation pump
N/A	TP500 & AX10	3 kw	N/A	1 x 0.35 HP









# Vacation range

## The Perfect Addition to Your Holiday Home.

Add a touch of luxury to your holiday property with the Vacation Range from Platinum Spas. Whether it's a holiday cottage, villa, holiday park, Airbnb, B&B, luxury retreat or glamping site, a hot tub is the ideal feature to elevate your guests' experience.

Proven to boost occupancy and revenue by up to 60%, installing a hot tub is not just a luxury—it's a smart business move.

The Vacation Range includes models that comfortably seat six to seven people, making it ideal for group stays and family breaks. Each hot tub is heat pump ready, allowing seamless integration with air source heat pump systems for energy-efficient operation.

Purpose-built for the holiday let market, these hot tubs feature a robust, minimalistic design with no breakable or removable components, ensuring durability under heavy usage. Their clean and contemporary aesthetic complements any garden, decking or outdoor environment.

For added convenience, every model is Wi-Fi enabled, allowing remote monitoring and control via a compatible smartphone or device—perfect for property owners and guests alike.

### Shell colour



Pure White

### Side panel at a glance



We have certified this product to the California Energy Commission in accordance with California law



## Vacation Aura



People	Dimensions	Total jets	Power supply	
5	2,100 x 2,100 x 900 mm	24	10 Amp	

Seat layout	Control	Heater	Pumps	Circulation pump
5 seats	TP500/AX50	2kw	1 x 3 HP	1 x 0.35 HP





## Vacation Lounge



People	Dimensions	Total jets	Power supply
4	2,000 x 2,000 x 800 mm	25	13 Amp/32 Amp

Seat layout	Control	Heater	Pumps	Circulation pump
5 seats + 1 lounger	TP500/AX40	2kw/3kw	1 x 3 HP	1 x 0.35 HP

Dry weight	Filled weight	Avg spa Water capacity
258 kg / 569 lbs	1,258 kg / 2,773 lbs	1,000 L / 264 Gallons

## Vacation Social



People	Dimensions	Total jets	Power supply
4	2,000 x 2,000 x 800 mm	25	13 Amp/32 Amp

Seat layout	Control	Heater	Pumps	Circulation pump
7 seats	TP500/AX40	2kw/3kw	1 x 3 HP	1 x 0.35 HP

Dry weight	Filled weight	Avg spa Water capacity
258 kg / 569 lbs	1,258 kg / 2,773 lbs	1,000 L / 264 Gallons

## Vacation Retreat



People	Dimensions	Total jets	Power supply
4	2,150 x 1,800 x 800 mm	23	13 Amp/32 Amp

Seat layout	Control	Heater	Pumps	Circulation pump
4 seats	TP500/AX40	2kw/3kw	1 x 3 HP	1 x 0.35 HP

Dry weight	Filled weight	Avg spa Water capacity
255 kg / 562 lbs	1,355 kg / 2,987 lbs	1,100 L / 290 Gallons



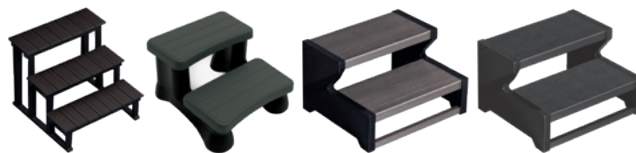


# The perfect accessories for your purchase

Elevate your Platinum Spas hot tub experience with accessories designed to enhance both function and style. Our carefully selected range adds outstanding value, providing useful features without ever compromising on aesthetics—so your relaxation space is as stylish as it is comfortable.

## Cover lifters

Our patented cover lifter systems make opening and closing the spa cover simple, helping maintain your hot tub, extending the life of your cover, and, most importantly, making it easier for you to enjoy your hot tub every day.



## VX2 cover lifter

The VX2 cover lifter is a premium, high-quality accessory designed to make removing and replacing your hot tub cover a breeze. Engineered for ease of use, the VX2 is perfect for hot tub owners who want to enjoy their spa without the hassle of handling a bulky, heavy cover. This best-selling cover lifter combines functionality with thoughtful design features, ensuring that you can effortlessly manage your hot tub cover while protecting it from damage. With the added convenience of integrated towel and robe hooks, the VX2 is a must-have addition to any hot tub setup.



## Undermount

The under-mount cover support is a practical and efficient solution designed to streamline the process of managing your hot tub cover. Engineered for convenience, this cover lifter sits neatly underneath your hot tub, offering robust support while minimising the effort required to lift and lower the cover. The cover lifter combines functionality with a space-saving design, making it an ideal choice for hot tub owners who want a reliable, easy-to-use accessory that enhances both the longevity of their cover and the overall hot tub experience.

## Caddy cover lifter

Caddy cover lifter - JZ001 is a versatile and practical solution designed to enhance your hot tub experience. Engineered with a focus on convenience and durability, this cover lifter simplifies the task of removing and replacing your hot tub cover, allowing you to enjoy your spa with minimal effort. The JZ001 combines robust construction with a sleek design, ensuring it not only performs well but also complements the aesthetic of your hot tub area. This lifter is an essential accessory for any hot tub owner looking for a reliable and easy-to-use cover management solution.



# Frequently asked questions

## Hot tub FAQs

### What is a 13 amp or Plug and play hot tub?

Plug and play hot tubs are suitable for areas where you are unable to get a 40 amp Power supply to it. A 13 amp hot tub will run off a standard 3 pin plug, which will need be sourced and supplied by you. The hot tub needs to have its own circuit from the main distribution board, the supply should not be shared. You will need to install a 13 amp outdoor waterproof plug socket with RCD protection. For full details of the electrical requirements, check with your hot tub retailer.

### What is a 32 amp hot tub?

The larger the hot tub the more power and electrical current that is needed. When you go up to three or four pumps for hot tubs you may be looking at a 40-amp feed. There is no such thing as a 32-amp hot tub. 32 amps is the amount of power that is required to run a standard hot tub that will have a heater and a couple of pumps running simultaneously. With a 32 amp you could use it for three or four hours and your heater won't turn off and the temperature will remain the same.

### How many seats do I need?

This is different for each customer depending on who will be using it – a couple, family or friends. Even if there will only be two people using the hot tub, different options of seats will allow you to soothe different muscles. You may also require a greater number of loungers rather than seats. We have varying options and can help you decide.

### How often should I drain my hot tub?

How often you drain your hot tub depends on a number of factors, including how frequently the spa is used, the quality of the water used to fill it, and how well the water is maintained. For optimum performance, we generally advise draining, cleaning, and refilling the hot tub every three to four months.

### I would like to sink my hot tub into the decking, is this possible?

We do not advise you to position your hot tub with decking built around it or underground as it can significantly impact future maintenance requirements. If you wish to do this, we advise you consult a structural engineer to ensure that your decking is capable of safely and adequately supporting the full weight of your hot tub when in use. The hot tub should be 200mm proud of the top of the decking to allow for the cover to clip onto the side.

### What are the access requirements?

It is the customer's responsibility to ascertain whether there is adequate space for the delivery of the hot tub. You must have a minimum width of 1m and a minimum height of 2.4m. Please check the full access requirements with your hot tub retailer.

## Swim spa FAQs

### Does my swim spa come with a drainage outlet?

Yes, your swim spa does come with a drainage outlet that is located at the bottom of the swim spa. However, a quicker way to drain your swim spa would be with a submersible pump.

### How hot does a swim spa get?

The water temperature can be set up to 40 degrees. The ideal water temperature for swimming is around 30 degrees but aquatic therapy should be up to 33 degrees. If you want to lounge in the therapy seats and relax then we recommend you set it to 37.5 degrees.

In the swim spas which have dual temperature units, where there is a barrier between the swim area and the hot tub; the hot tub side of the unit can be heated to 40 degrees.

### Can someone sit in a seat whilst another person is swimming?

Yes, you may get a little wet from any splashes but sit back, relax and enjoy watching them swim or workout.







## Real customers, real relaxation

**At Platinum Spas, we're proud to see our hot tubs becoming the centrepiece of so many homes.**

Whether it's a stylish city garden, a cosy countryside retreat, or a modern outdoor living space, our hot tubs bring a touch of luxury and relaxation to any setting. These real-life installations showcase just how versatile and beautifully integrated a Platinum Spa can be in your personal space.

Each Platinum Spa is designed with innovation and craftsmanship, transforming your outdoor area into a private haven for wellness and rejuvenation. Our customers continue to inspire us with how they've made our spas their own, creating spaces for relaxation, entertainment, and family time.

### What our customers say

"We couldn't be happier with our Platinum Spa. It's the perfect way to unwind after a long day, and the jets are incredible for soothing sore muscles. The whole family loves it, and it looks stunning in our garden!" – *Sophie and James T.*

"Our hot tub has truly transformed our outdoor space. We installed it on our decking, and it's become the focal point for gatherings with friends. The build quality is exceptional, and the massage functions are beyond anything we've experienced before." – *Darren P.*

"I love how the Platinum Spa has enhanced our wellness routine. We use it almost every evening to relax, and the water is always crystal clear with minimal effort. It's the best investment we've made for our home." – *Laura M.*

"I was amazed at how seamlessly the spa integrated into our patio. It looks elegant and offers a five-star experience right in our garden. The customisable jets are a real game changer for getting the perfect massage." – *Rebecca and David H.*



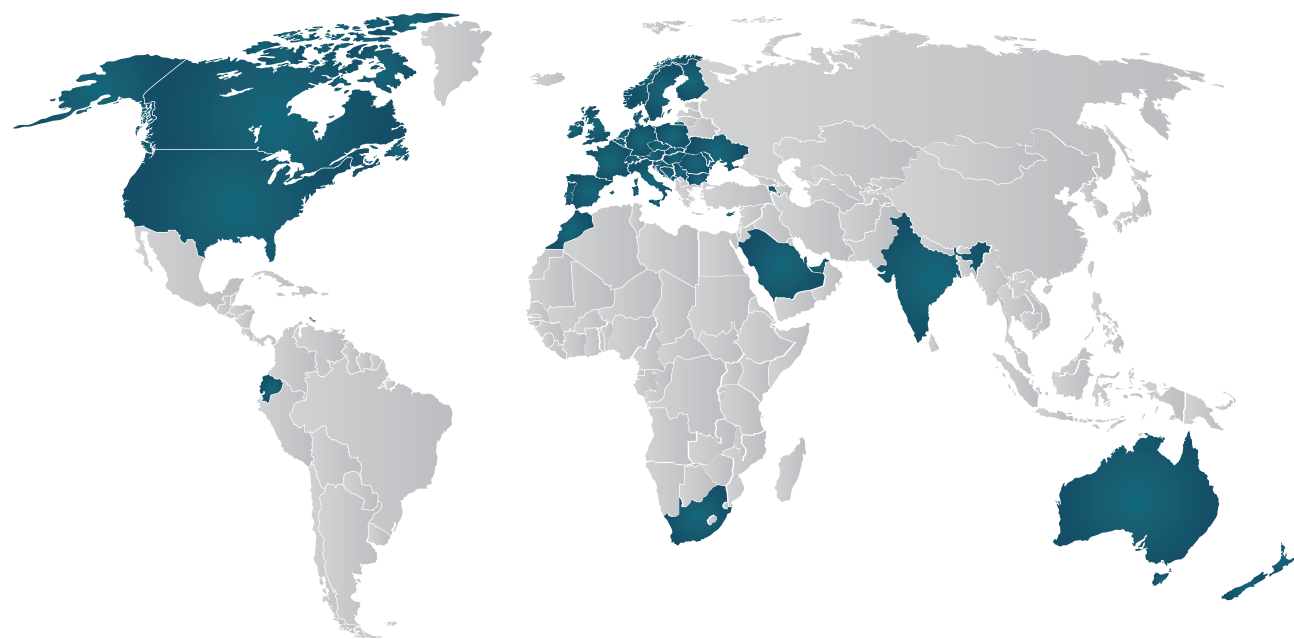


# Experience relaxation worldwide with our products

**With our hot tubs, you’re never far from a slice of pure relaxation. Whether you’re in the rolling hills of the UK, the bustling cities of the United States, or the scenic landscapes of Norway, you’re in good company – and fully supported.**

We take pride in offering reliable hot tub experiences across the globe. Our team stands by your side every step of the way, bringing you the best in comfort, quality, and service. Join the countless happy customers in over 40 countries who’ve found their perfect escape with us, including:

United Kingdom	Poland	Australia	Ireland	Morocco	Czech Republic
United States	Portugal	Finland	Greece	New Zealand	Bulgaria
Germany	Belgium	Romania	India	Ecuador	Luxembourg
France	Slovenia	Morocco	Sweden	Dubai	Latvia
Spain	Croatia	Switzerland	Slovakia	Moldova	Macedonia
Netherlands	Denmark	Norway	Bosnia	Serbia	Lithuania
Austria	Canada	Cyprus	Malta	Armenia	



Rediscover relaxation with a brand you can trust – no matter where you are. Let us bring comfort to your corner of the world



# Getting in touch

**For more information please speak to our  
friendly and dedicated team members.**

Find & follow us on



Retailer information